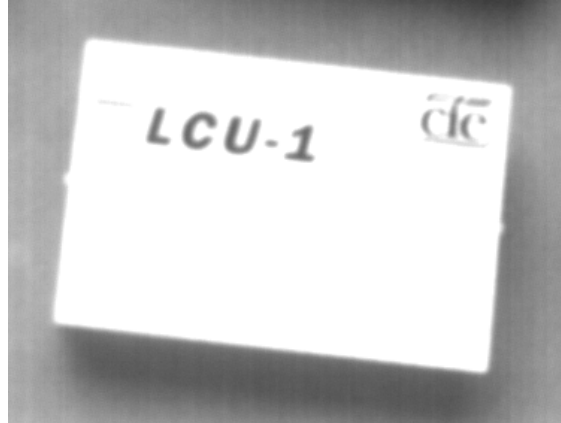


Premier Acoustic Product Datasheet



LCU-1 LEVEL CONVERTER UNIT



The LCU-1 offers a cost effective means of reducing either 70 volt or 100 volt signals to either line or microphone level signals for use as an input to additional amplifiers in a system. The LCU-1 is comprised of a 70/100 volt transformer with 2 secondary windings each coupled to variable resistive attenuators enabling the unit to supply two line level and two microphone level signals from a single 70 or 100 volt signal source.

When using the mic level outputs it is recommended that the screen chassis links be left in place to reduce the possibility of hum pick-up. However, care must be taken when using both mic level outputs to separate amplifiers not to create earth loops within the system. To prevent this happening it may be necessary to remove just one of the screen chassis links and leave the other intact.

TECHNICAL SPECIFICATION

Input Signal Level	100V (RMS) Max
Output Signal Level (Line 1)	0-1V (RMS)
Output Signal Level (Line 2)	0-1V (RMS)
Output Signal Level (Mic 1)	0-10mV (RMS)
Output Signal Level (Mic 2)	0-10mV (RMS)
Weight	1kg (Approx)

Premier Acoustic Ltd, Unit 9, Sedgley Trading Estate, Sedgley Park,
Prestwich, Manchester M25 9WS

Tel: 0161 798 6336 Fax: 0161 798 6226