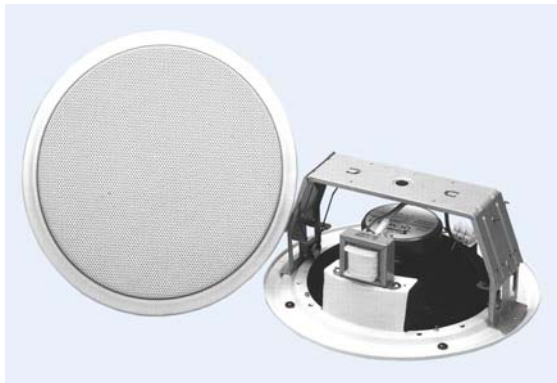


Premier Acoustic Product Datasheet



Model: PRO20/T



Description

High performance, 20 watt co-axial music ceiling speaker with 8" polypropylene co-axial driver, 2.5" mylar tweeter and 13oz magnet.

Wide frequency response for highest quality music reproduction.

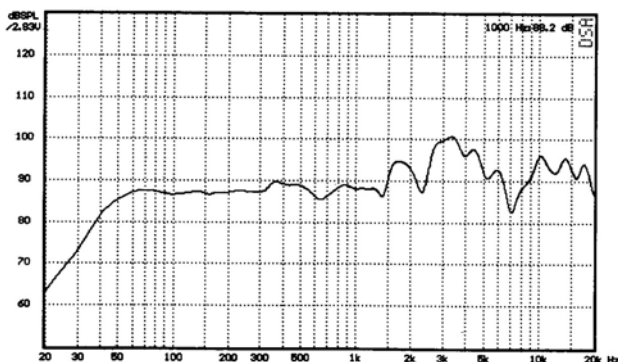
Innovative fitting system for fast and simple installation.

Built in ceiling tile cut-out marker

Specification

Power Handling	20 watts
Rated Input	100 volt
Transformer Tappings	20, 10, 5, 2.5 watts
SPL (1w/1m)	89dB
Max SPL (rated/1m)	102dB
Frequency Response	50Hz – 20kHz
Dimensions (diameter x depth)	270mm x 127mm
Cutout Size (diameter)	230mm
Material	steel
Weight (inc. packaging)	2.2kg
Dispersion 1kHz/4kHz	120° / 40°
Colour	White RAL 9003

Frequency Response



Polar Plot

